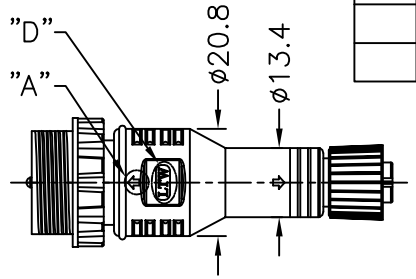
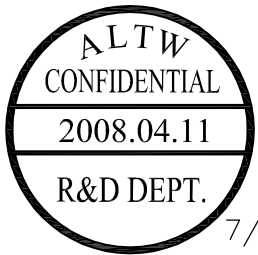
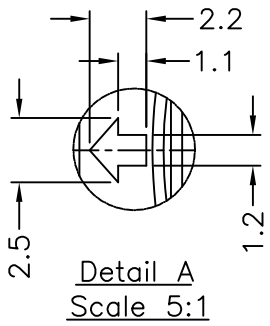
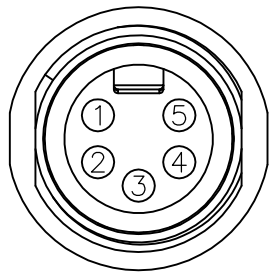
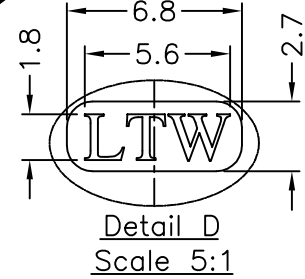
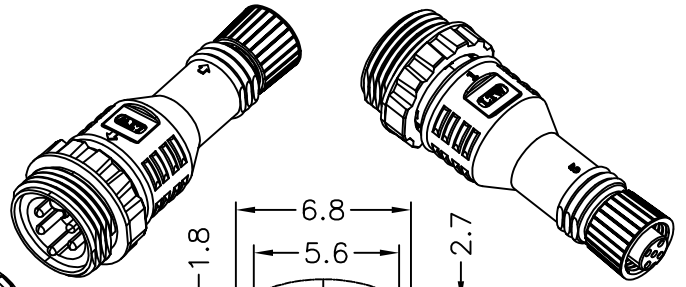
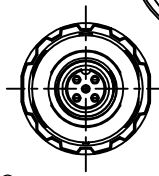
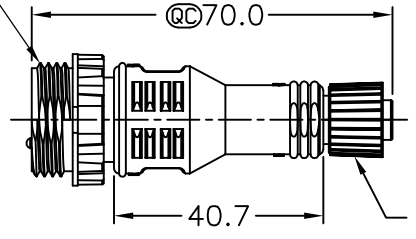
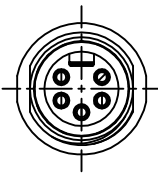


THIS DOCUMENT IS SUBJECT TO CHANGE WITHOUT NOTICE. IT IS CONFIDENTIAL AND A PROPERTY OF Amphenol LTW. DISCLOSURE TO THIRD PARTY HAS TO BE AUTHORIZED BY Amphenol LTW.

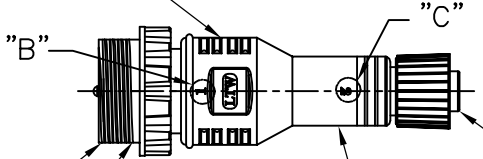
5	6	7	8
REV.	ECN NO.	DATE	SIGN



7/8"-16 UN

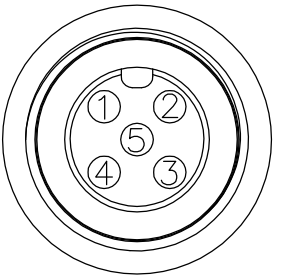
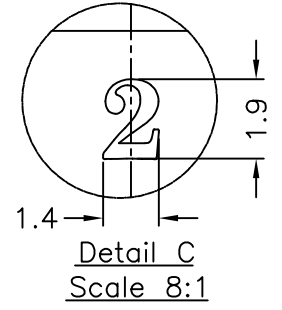
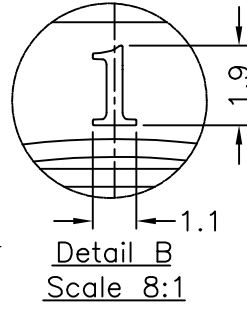


Inner Mold (12)
Outer Mold (13)
Color: Black



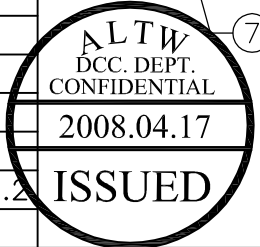
Connector (1)
Nut (2)

(3) Connector
(4) O-Ring
(5) Pin
(6) Nut
(14) Pin



Blue 藍 (22AWG)	5	5
White 白 (22AWG)	4	4
Black 黑 (18AWG)	3	3
Red 紅 (18AWG)	2	2
Yellow 黃 (22AWG)	1	1
Wire Color	Conn.1	Conn.2

Pin Out



(7)~(11) Wire Harness

- Note:
- * \textcircled{R} Important Dimension.
 - * Waterproof Rate: IP68
 - * Connector 1 : Black, PU
 - * Connector 2 : Black, PU
 - * Pin: Copper Alloy, Gold Plated 6u"
 - * O-ring: Green, Viton
 - * Nut: Zinc, Nickel Plated
 - * Text Depth : 0.3 mm
 - * Wire Harness: UL1007 18AWG 2Pcs & UL1007 22AWG 3Pcs

UNIT:mm

.X	± 0.25
.XX	± 0.1
.XXX	± 0.05
ANGLES	$\pm 1^\circ$

TITLE NMEA2000 MINI-C TO MICRO-C ADAPTOR	
SCALE Free	SHEET 1 OF 1
REV. A	SIZE A4
\textcircled{R} : Inspection Item	

Amphenol LTW
安費諾亮泰企業股份有限公司

ITEM NO NC-000505-0MF-IS001	DRAWN BY Cloud	DATE 2008/04/15
DWG NO NC-000505-0MF-IS001	CHECKED BY Kathy Huang	DATE 2008/04/15
CUSTOMER ALTW	APPROVED BY Luke	DATE 2008/04/15

DATE 2008/04/15
DATE 2008/04/15
DATE 2008/04/15