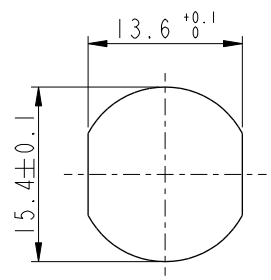


THIS DOCUMENT IS SUBJECT TO CHANGE WITHOUT NOTICE. IT IS CONFIDENTIAL AND A PROPERTY OF Amphenol LTW. DISCLOSURE TO THIRD PARTY HAS TO BE AUTHORIZED BY Amphenol LTW.

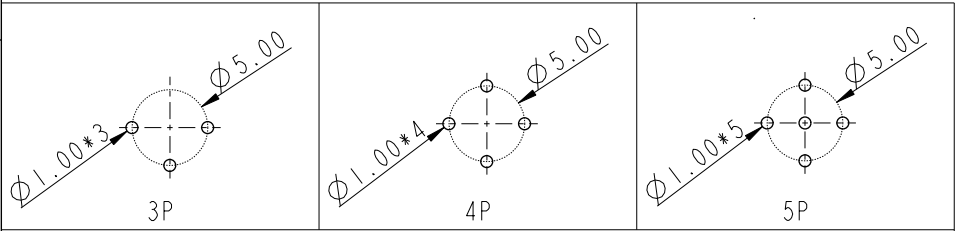
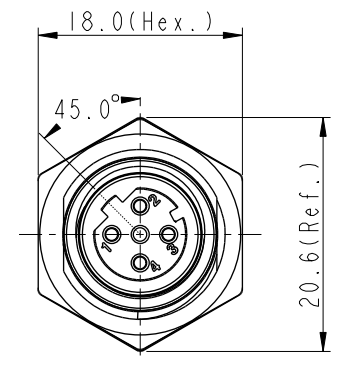
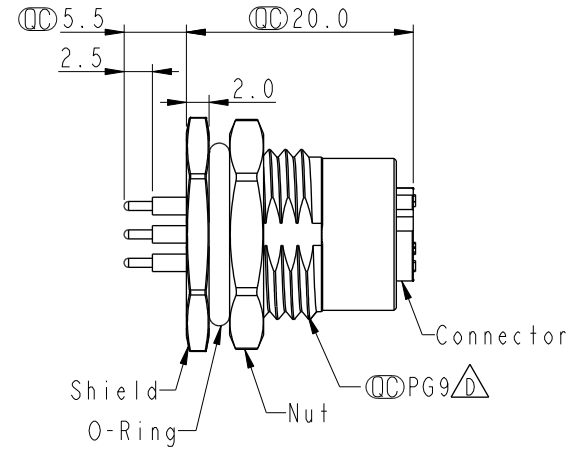
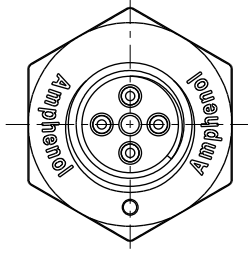
| REV. | ECN NO. | DATE | SIGN | DESCRIPTION |
|------|----------------|------------|-------------|-----------------------|
| C | LEN1690149-150 | 2016/08/24 | Yulong_wang | Add 3, 5 Pin & IP69K. |
| D | C201469 | 2020/09/25 | Ruru | $\triangle D$ X6 |
| E | C210309 | 2021/02/26 | Ruru | $\triangle E$ X2 |



$\triangle C \triangle D$
MI2D-XXPFFP-SF8001

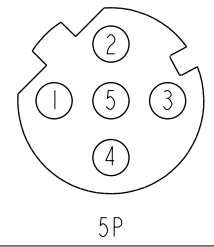
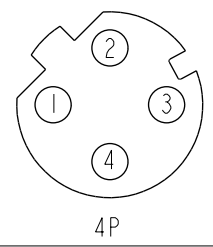
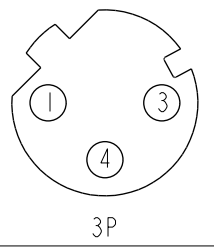
XX: No. Of Pin

Recommended
Panel Cut-Out



PCB Layout

- $\triangle D \triangle E$ Note:
- * RoHS Compliant
 - * Ⓞ Important dimension
 - $\triangle C$ * Waterproof rate: IPX8, unmated 1m/24h
IPX9K, unmated
 - * Connector
Housing: Thermoplastic, Black
Pin: Copper alloy, Gold plated
O-Ring: Rubber, Green
 - * Shield: Metal
 - * Nut: Metal
 - * O-Ring: Rubber, Black
 - * For panel thickness max: 4.5mm
 - * Nut is packed separately in pe bag



Pin Assignment Front View

| | | | | | |
|------------|--|------------------------------|---|---------|-----|
| UNIT: mm | | TITLE | N SEN, MI2 D, SCREW RECEPTACLE, F, F, PCB S $\triangle E$ | | |
| TOLERANCE | | SCALE | 3:2 | SIZE | A4 |
| .X ±0.25 | | REV. | E | WC-REV. | A.5 |
| .XX ±0.1 | | SHEET 1 OF 1 | | | |
| .XXX ±0.05 | | Ⓞ : Inspection item | | | |
| ANGLES ±1° | | | | | |

Amphenol LTW
安費諾亮泰企業股份有限公司

| | | |
|----------------------------------|-------------|------------|
| ITEM NO | DRAWN BY | DATE |
| | Yulong_wang | 2016-08-24 |
| DWG NO | CHECKED BY | DATE |
| $\triangle A$ MI2D-XXPFFP-SF8001 | Cary | 2016-08-24 |
| CUSTOMER | APPROVED BY | DATE |
| ALTW | Jerry | 2016-08-24 |