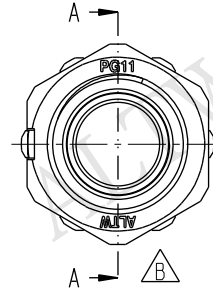
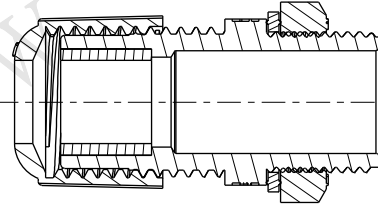
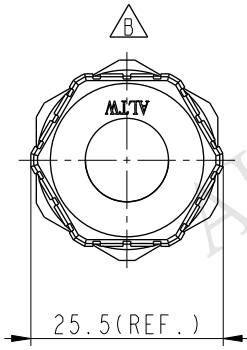
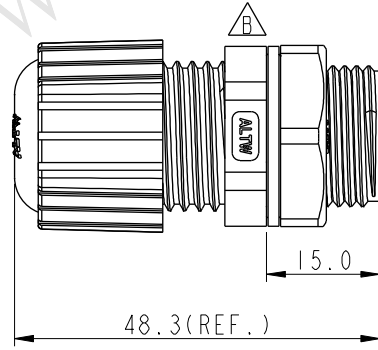
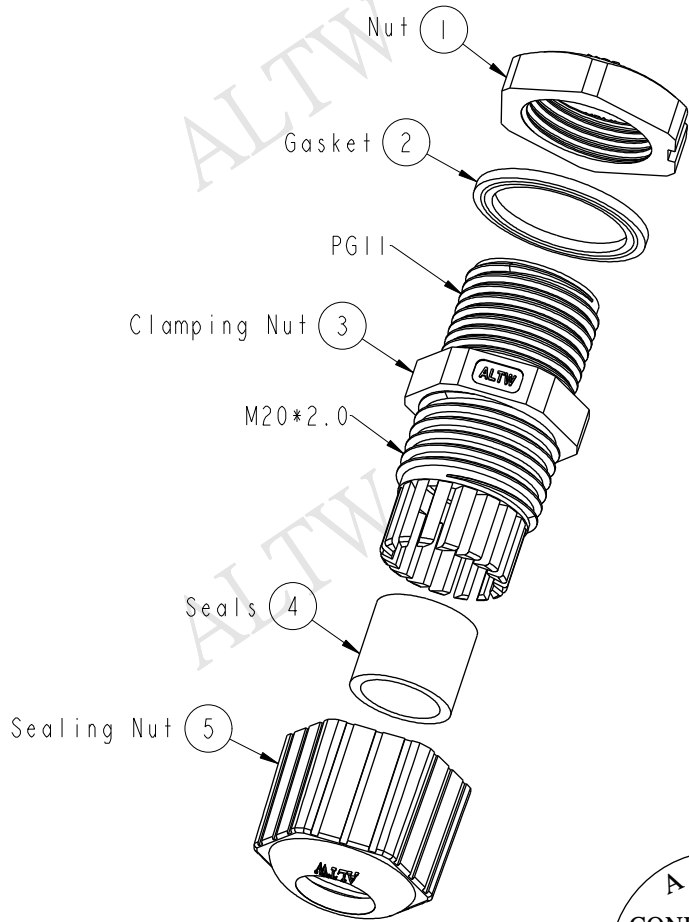
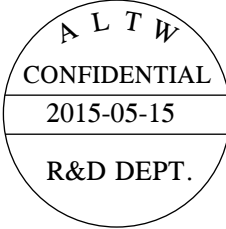
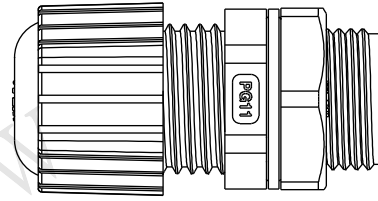


REV.	ECN NO.	DATE	SIGN	DESCRIPTION
B	LEN1560161	2015/05/15	Ruru	Change Logo



Section A-A



- Note:
- \* Waterproof Rate: IP68
  - \* Screw Nut: Nylon, Gray
  - \* Clamp Ring: Nylon, Gray
  - \* Sealing Nut: Nylon, Gray
  - \* Gasket: EPDM, Black
  - \* Seals: EPDM, Black
  - \* Cable Range:  $\varnothing 6.0 \sim \varnothing 10.0$ mm
  - \* For Panel Thickness: 6.0mm max
  - \* Spanner Size:
    - Body: 22.0mm
    - Sealing Nut: 22.9mm
    - Screw Nut: 24.0mm

UNIT:mm		
TOLERANCE		
±0.5 mm		

TITLE PG11 Cable Glands			
SCALE 1:1	SIZE A4	SHEET 1 OF 1	
REV. B	WC-REV. A.2	QC: Inspection item	

**Amphenol LTW**  
安費諾亮泰企業股份有限公司

ITEM NO CSG-11G002	DRAWN BY Ruru	DATE 2015-05-15
DWG NO CSG-11G002	CHECKED BY Rita	DATE 2015-05-15
CUSTOMER ALTW	APPROVED BY Lion	DATE 2015-05-15

THIS DOCUMENT IS SUBJECT TO CHANGE WITHOUT NOTICE. IT IS CONFIDENTIAL AND A PROPERTY OF AMPHENOL LTW. DISCLOSURE TO THIRD PARTY HAS TO BE AUTHORIZED BY AMPHENOL LTW.