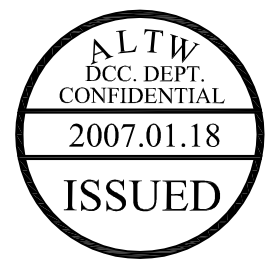
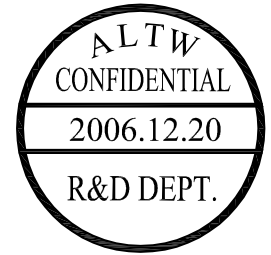
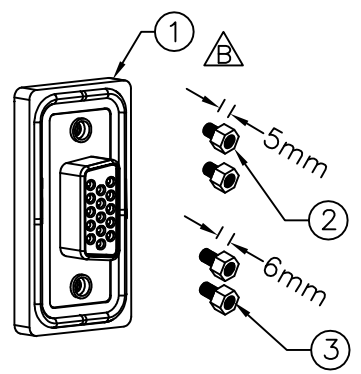
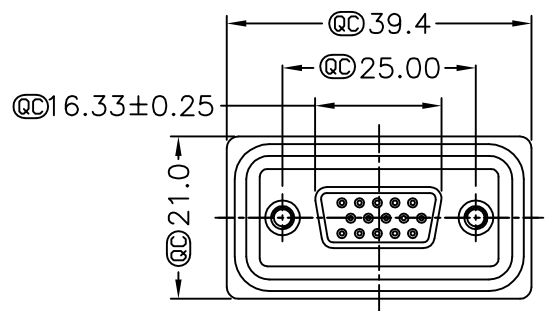
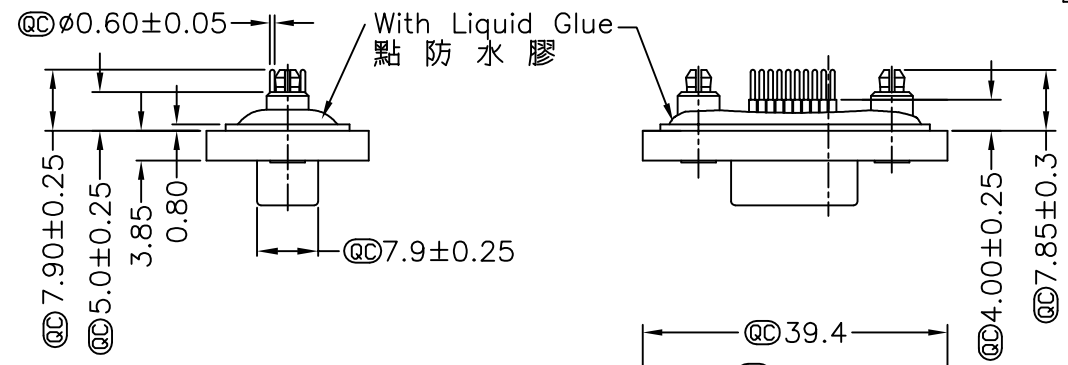
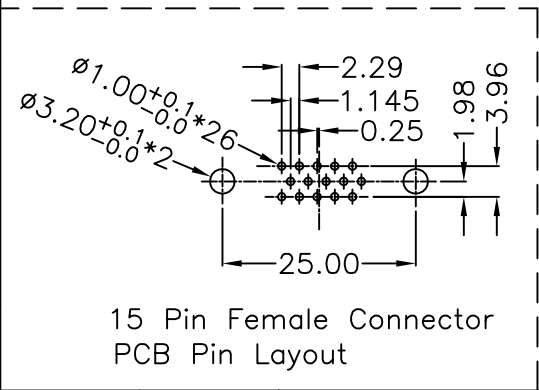


5	6	7	8
REV. A	ECN NO.	DATE 2006/03/01	SIGN DAVID
B	LE3-710072	2006/12/20	DongYaLi
			DESCRIPTION Released Rev.A
			Move O-Ring To ZSE00100771

THIS DOCUMENT IS SUBJECT TO CHANGE WITHOUT NOTICE. IT IS CONFIDENTIAL AND A PROPERTY OF Amphenol LTW. DISCLOSURE TO THIRD PARTY HAS TO BE AUTHORIZED BY Amphenol LTW.

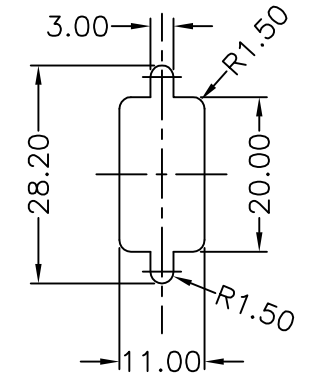


- Note:
- \* @C Important Dimension.
  - \* Waterproof Rate : IP68  
IP68:1M of depth of water 24 hours  
(防水等級 IP68)  
(IP68:1米水深 24小時)
  - \* Do Mating Test After Glued  
點膠後, 須作對插測試
  - △\* HD-SUB Conn. :Black Core , PBT
  - △\* Plastic Jacket : Black , Nylon+GF
  - △\* Pin : Copper Alloy , Gold Plated
  - △\* Ring : Light Blue,Silicone
  - △\* Screw : Copper Alloy,Nickel Plated,#4-40 UNC
  - \* The 180° Board Lock Needs To Connect The Iron Shell  
180° 型支架需接鐵殼



Screw L=5.0 For Panel Thickness Under 1.2mm  
適用板厚為 1.2mm 以下

Screw L=6.0 For Panel Thickness Between 1.2~2.0mm  
適用板厚為 1.2~2.0mm



Recommended Panel Cut-Out  
建議挖孔尺寸

UNIT:mm		TITLE HD-SUB Connector 15Pin Female For Panel,PCB 180° Board Lock
TOLERANCE .X ±0.25 .XX ±0.1 .XXX ±0.05 ANGLES ±1°	SCALE Free	SHEET 1 OF 1
REV. B	SIZE A4	@C :Inspection Item

**Amphenol LTW**  
安費諾亮泰企業股份有限公司

ITEM NO HDB-15PFFP-SA8001	DRAWN BY DongYaLi	DATE 2006/12/20
DWG NO HDB-15PFFP-SA8001	CHECKED BY Simon	DATE 2006/12/20
CUSTOMER ALTW	APPROVED BY Max	DATE 2006/12/20

A B C D E F

1 2 3 4 5 6 7 8