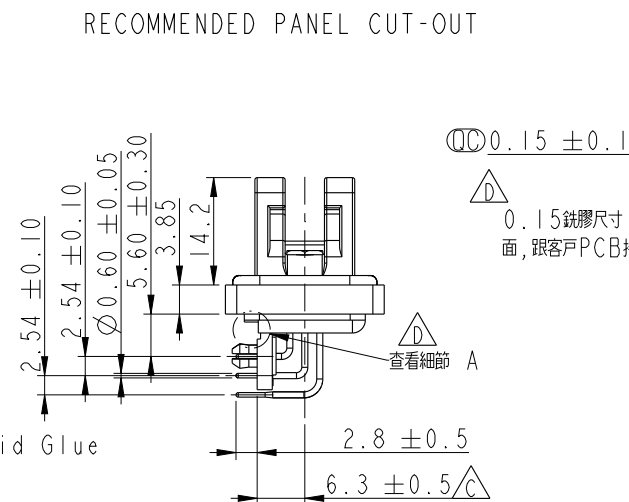
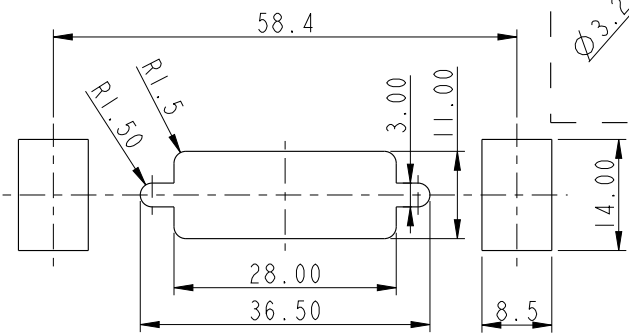
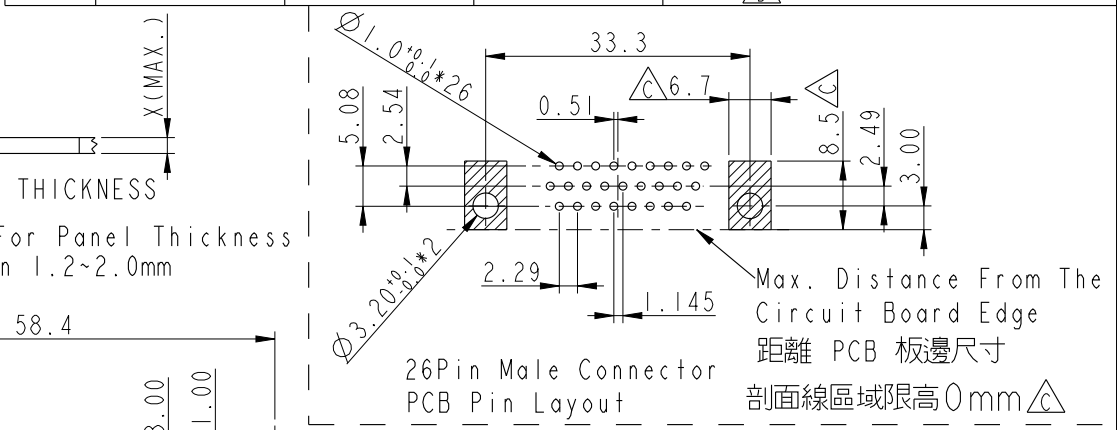
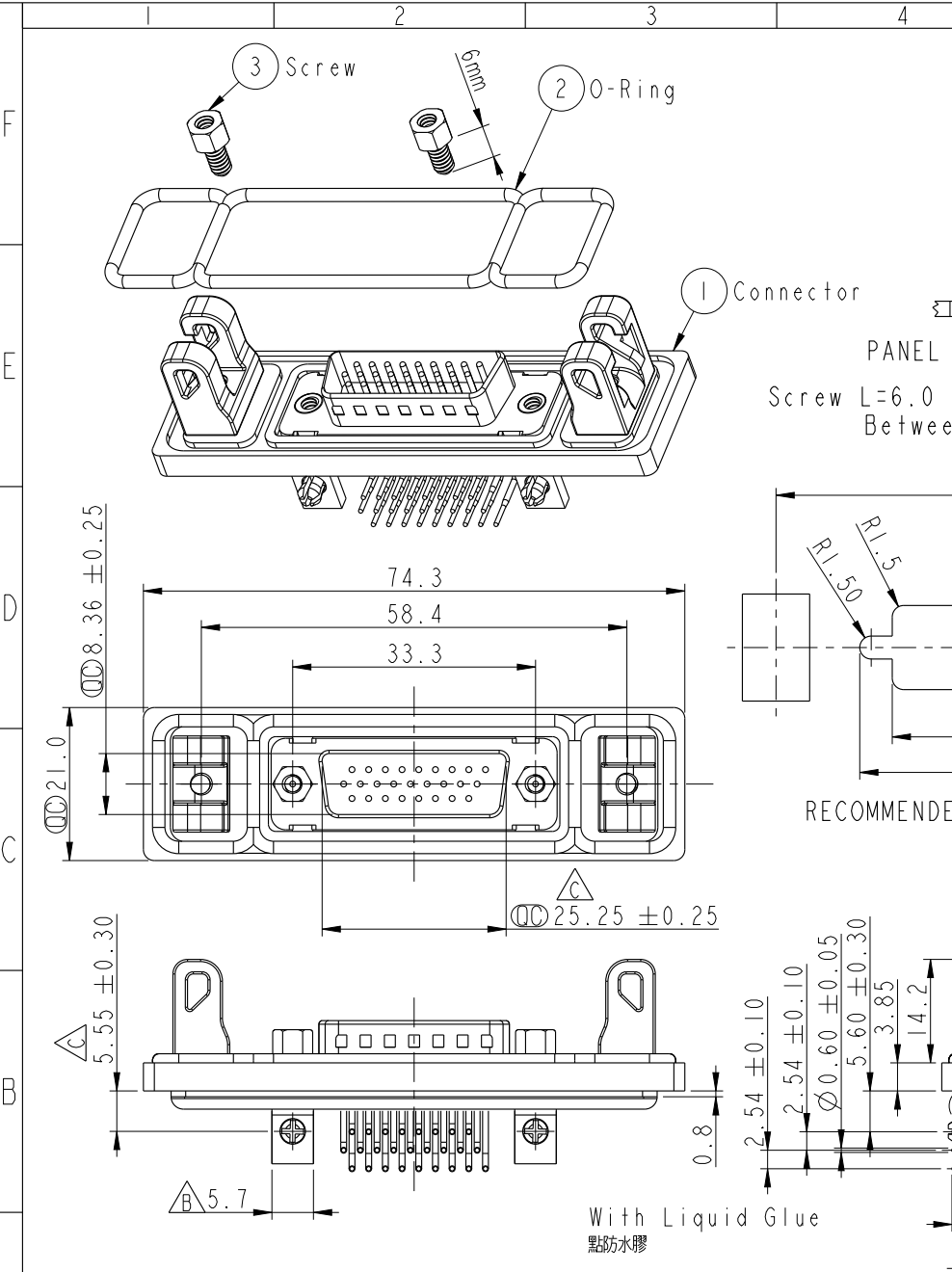


THIS DOCUMENT IS SUBJECT TO CHANGE WITHOUT NOTICE. IT IS CONFIDENTIAL AND A PROPERTY OF Amphenol LTW. DISCLOSURE TO THIRD PARTY HAS TO BE AUTHORIZED BY Amphenol LTW.

REV.	ECN NO.	DATE	SIGN	DESCRIPTION
B	LEN1390202	2013/09/02	Lu Di	Update Dimension
C	LEN1490286	2014/09/16	Vicky	Update Dimension
D	C200380	2020/03/30	JC Chen	△XI



- Note:
- * \varnothing Important Dimension.
 - * Waterproof Rate: IP68
IP68: 1M of depth of water 24 hours
 - * Material:
Panel: Zinc
Panel Link: Zinc
Screw: Stainless, #4-40 UNC
O-Ring: Silicone, Black
Insulator: PBT
Shell: Cold Rolled Steel
Contact: Copper Alloy
Board Lock: Copper Alloy
 - * Finish:
Panel: Nickel Plated
Panel Link: Nickel Plated
Board Lock: Nickel Plated
Shell: Nickel Plated
Contact: Gold Flash

UNIT: mm		TITLE D-SUB CONN PANEL QUICK HD26P M CONN M PIN	
TOLERANCE .X ±0.25 .XX ±0.1 .XXX ±0.05 ANGLES ±1°		SCALE 1:1	SIZE A4
		REV. D	WC-REV. A.4
		SHEET 1 OF 1	
		△: Inspection item	

Amphenol LTW
安費諾亮泰企業股份有限公司

ITEM NO. HDB-26PMMP-QB8001	DRAWN BY Vicky	DATE 2014/09/16
DWG NO. HDB-26PMMP-QB8001	CHECKED BY Sam	DATE 2014/09/16
CUSTOMER ALTW	APPROVED BY Rita	DATE 2014/09/16