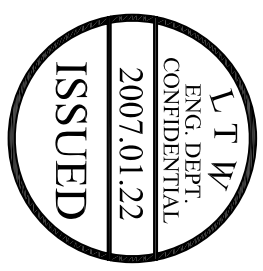
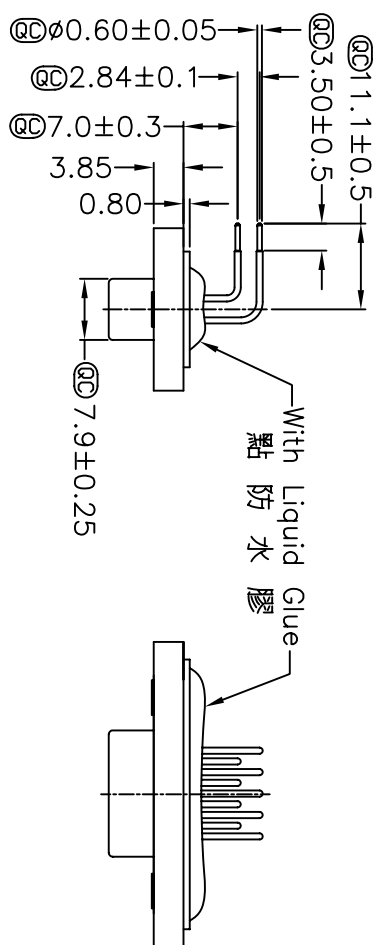


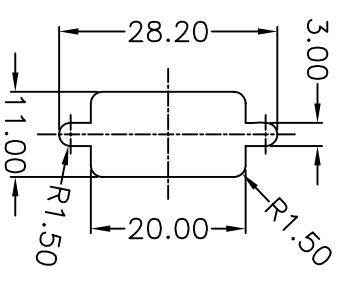
|      |         |      |      |             |
|------|---------|------|------|-------------|
| REV. | EON NO. | DATE | SIGN | DESCRIPTION |
|      |         |      |      |             |
|      |         |      |      |             |
|      |         |      |      |             |



Panel Thickness  
面板厚度  
X(Max.)

Screw L=5.0 For Panel Thickness  
Under 1.2mm  
適用板厚為 1.2mm 以下

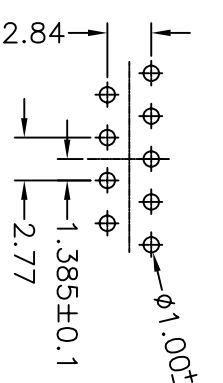
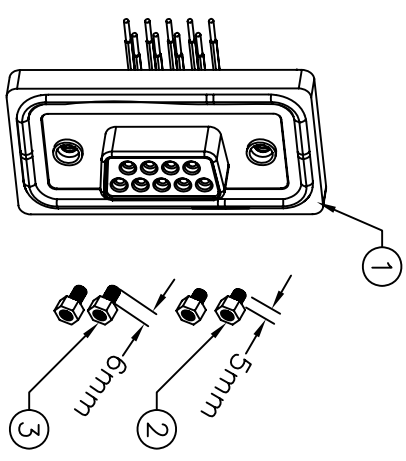
Screw L=6.0 For Panel Thickness  
Between 1.2~2.0mm  
適用板厚為 1.2~2.0mm



Recommended Panel Cut-Out  
建議挖孔尺寸

Note:

- \* @Important Dimension.
- \* Waterproof Rate : IP68
- IP68:1M of depth of water 24 hours (防水等級 IP68 ) (IP68:1米水深24小時)
- \* Do Mating Test After Glued 點膠後,須作對插測試
- \* D-SUB Conn. :Black Core , PBT
- \* Plastic Jacket : Black , Nylon+GF
- \* Pin : Copper Alloy , Gold Plated
- \* Ring : Light Blue,Silicone
- \* Screw : Copper Alloy,Nickel Plated,#4-40 UNC



9 Pin Female Connector  
PCB Pin Layout  
Scale 2:1

|           |  |                    |  |                      |  |             |  |            |  |
|-----------|--|--------------------|--|----------------------|--|-------------|--|------------|--|
| UNIT:mm   |  | TITLE              |  | ITEM NO              |  | DRAWN BY    |  | DATE       |  |
| TOLERANCE |  | D-SUB Conn.        |  | LTWSDB-09PFFP-SR8001 |  | DongYali    |  | 2006/12/15 |  |
| .X        |  | Panel Screw        |  | DWG NO               |  | CHECKED BY  |  | DATE       |  |
| .XX       |  | DB9P F Conn. F Pin |  | LTWSDB-09PFFP-SR8001 |  | Simon       |  | 2006/12/15 |  |
| .XXX      |  | Free               |  | CUSTOMER             |  | APPROVED BY |  | DATE       |  |
| ANGLES    |  | A4                 |  | 亮泰企業股份有限公司           |  | Max         |  | 2006/12/15 |  |
| ±0.25     |  | SHEET 1 OF 1       |  |                      |  |             |  |            |  |
| ±0.1      |  | : Inspection Item  |  |                      |  |             |  |            |  |
| ±0.05     |  |                    |  |                      |  |             |  |            |  |
| ±1°       |  |                    |  |                      |  |             |  |            |  |